

# White Christmas

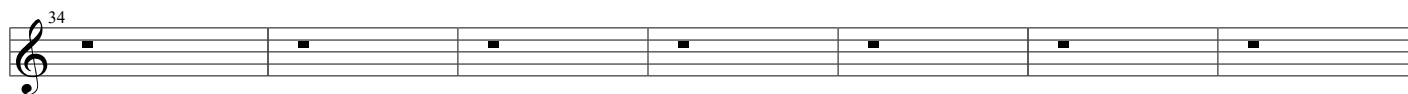
Words & Music by Irving Berlin

♩ = 95

S. *mf*

I'm drea- ming of a  
white Christ- mas Just like the ones I used to  
know Where the tree- tops glis- ten And  
chil- dren lis- ten To hear sleigh bells in the  
snow. Uuuh I'm drea- ming of a  
white Christ- mas With eve- ry Christ- mas card I  
write May your days be mer- ry and  
bright And may all your Christ- mas- es be white.

The image shows a musical score for the song 'White Christmas'. It consists of a single vocal line in 4/4 time, marked with a tempo of 95 beats per minute and a dynamic of mezzo-forte (mf). The score is written on a grand staff with a treble clef and a key signature of one sharp (F#). The lyrics are: 'I'm dreaming of a white Christmas Just like the ones I used to know Where the tree-tops glisten And children listen To hear sleigh bells in the snow. Uuuh I'm dreaming of a white Christmas With every Christmas card I write May your days be merry and bright And may all your Christ-mases be white.' The score includes measure numbers 1, 5, 9, 13, 17, 21, 25, and 29. There are various musical notations such as rests, notes, and slurs throughout the piece.



Where the tree-tops glis- ten And



chil- dren lis- ten To hear sleigh bells in the



snow. Uuuh I'm drea- ming of a



white Christ- mas With eve- ry Christ- mas card I



write May your days be mer- ry and



bright  $\text{♩} = 85$  And may all your Christ- mas- es be  $\text{♩} = 75$  whi- - te.

